

All About Accommodations

July 2023
NYC

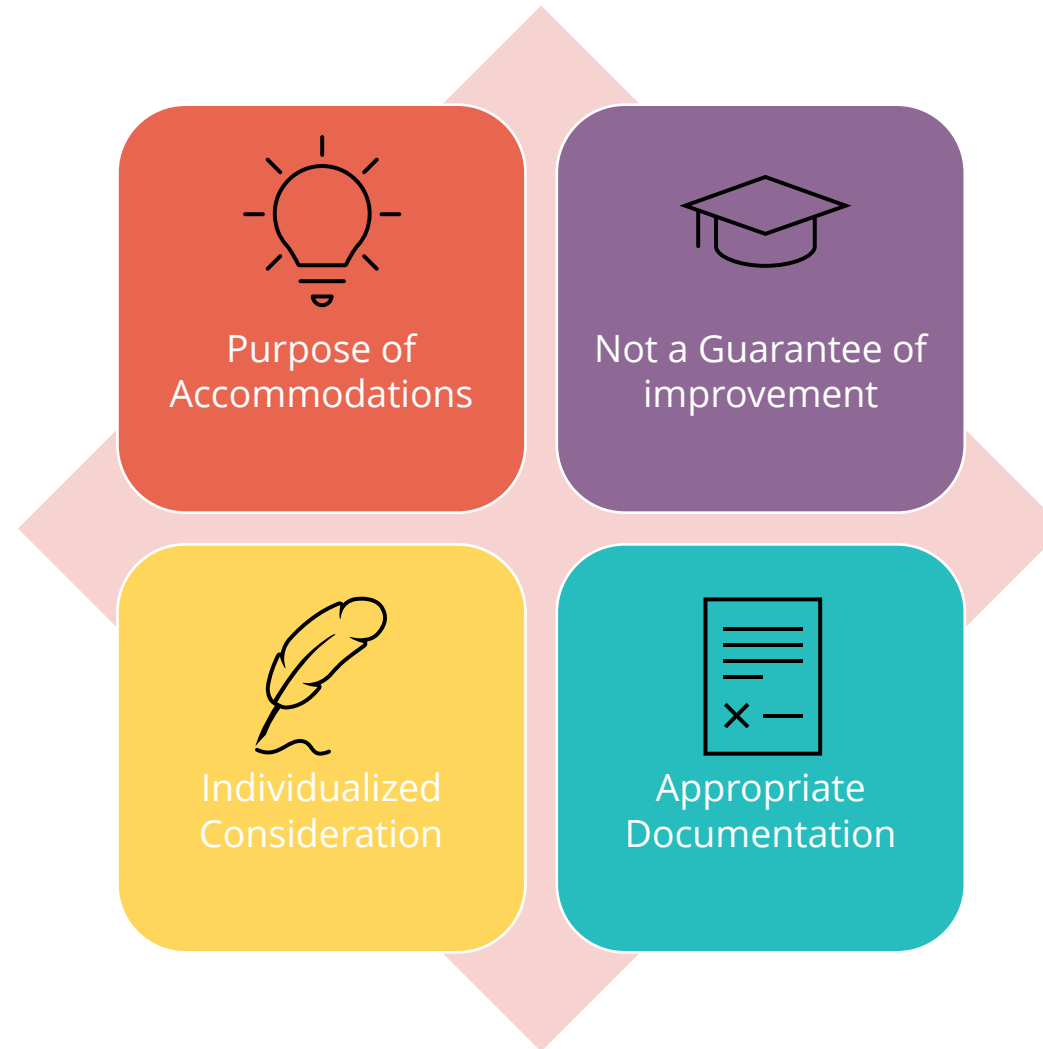


Agenda

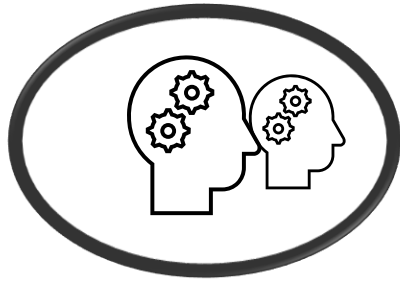
- Overview
- Disability categories
- Accommodation process
- Documentation requirements
- Best way to assist
- Questions



Accommodations Overview

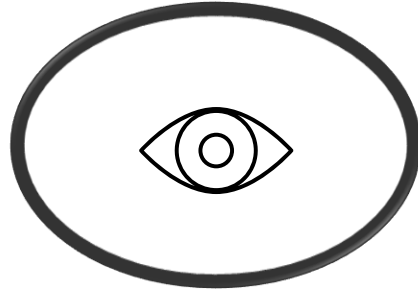


Categories of Disabilities



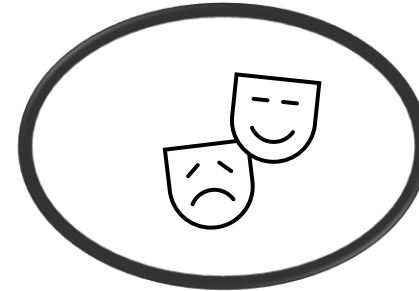
**Learning and Other
Cognitive Disabilities**

**Documentation within the
last 5 years**



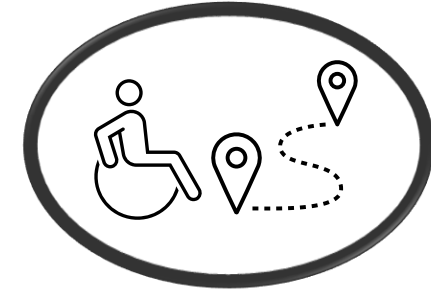
**Attention Deficit
Hyperactivity Disorder**

**Documentation within the
last 5 years**



**Psychological and
Psychiatric Disorders**

**Documentation within the
last 1 year**



**Physical Disorders and
Chronic Health
Conditions**

**Documentation within the
last 1 year**

What is NOT considered a disability?

ESL (English as Second Language)

“Slow Learner”

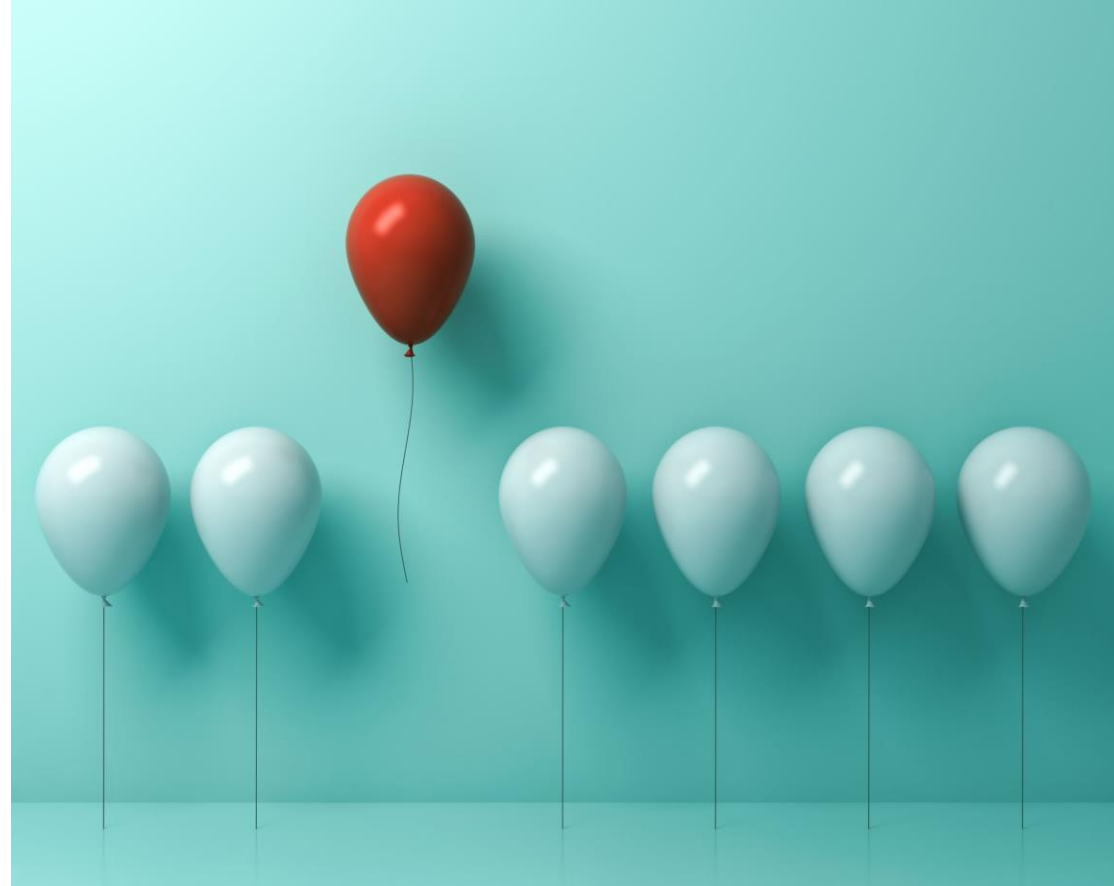
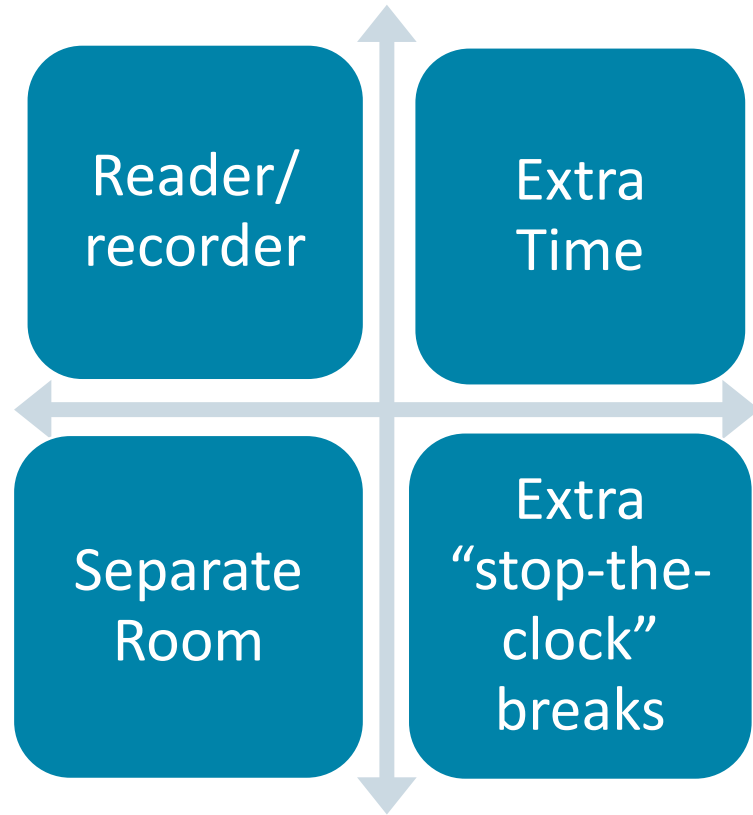
Active substance abuser

Test Anxiety



Homemade diagnoses

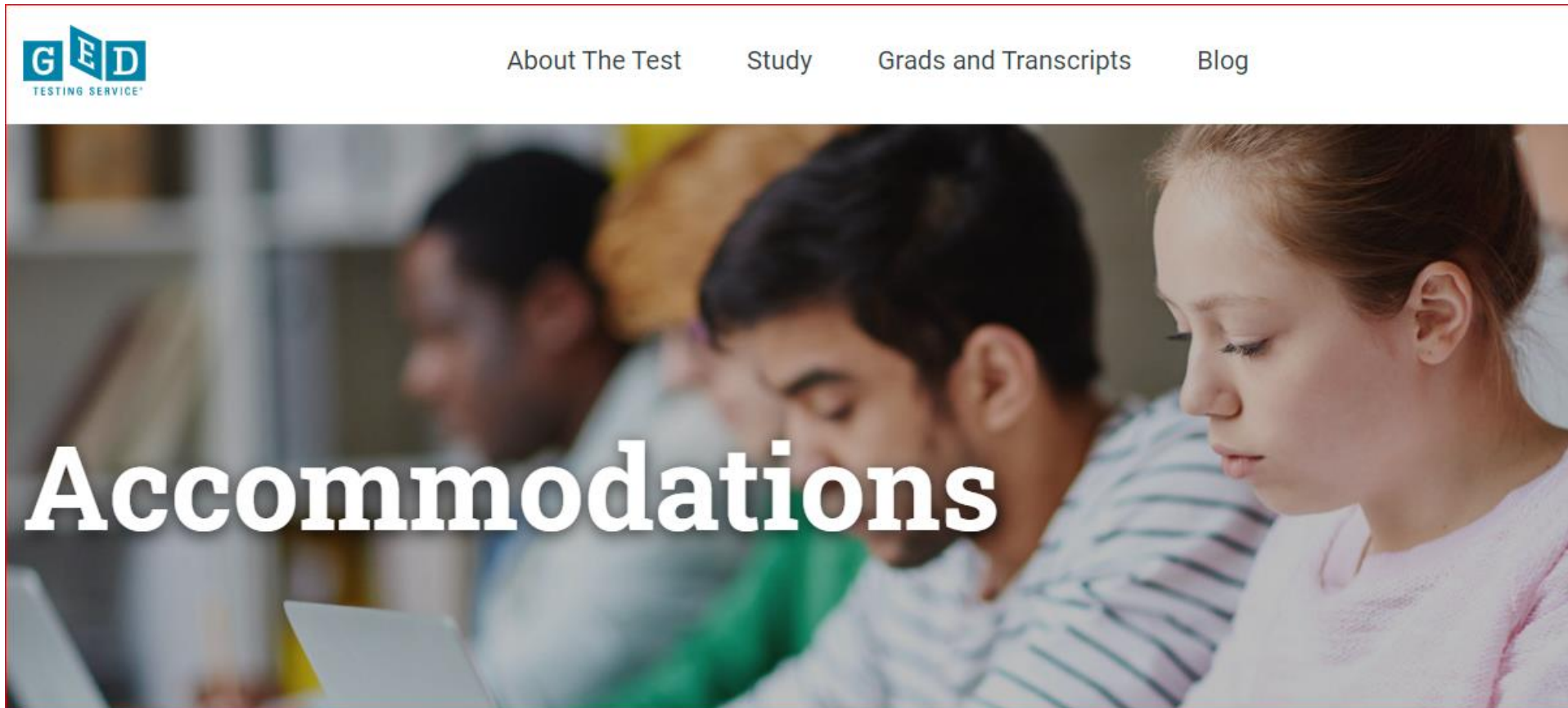
Commonly Requested Accommodations



Documentation Guidelines

Review documentation guidelines:

https://ged.com/about_test/accommodations/



Accommodation Request Volume

Year	Total Requests	Approved/Partial Approval	Incomplete	Denied
Jan-June 2023	3462	2831	622	9
2022	4457	3633	800	24
2021	2638	2004	619	15

2023 average turnaround time 12.9 days



Accommodation System Features

Online Request System

Candidates request accommodations online. Starts with them clicking “yes” to the accommodation question on GED.com

Web Scheduling

Candidates with approvals of extra time, breaks and other things that do not require manual intervention are directed to schedule online.

Assistive Technology

Universal Access
features



Adaptive
equipment



Magnification



JAWS



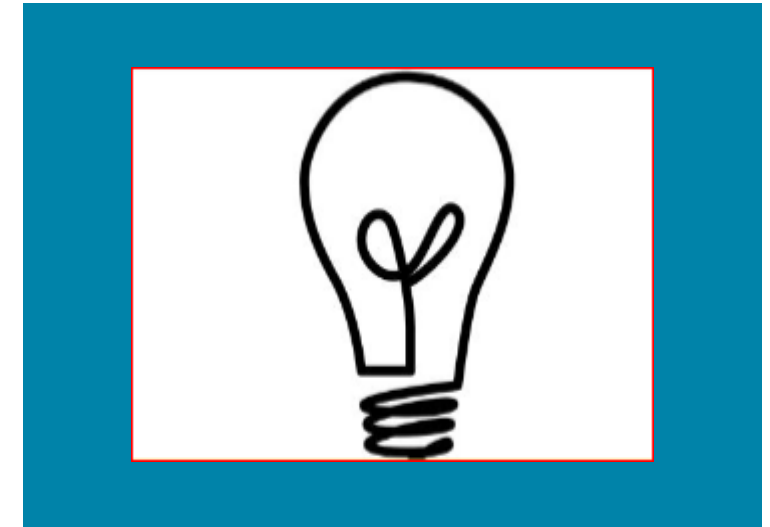
Emerging Trends in Accommodations and Accessibility



Accommodation vs
Fundamental Alteration



Accommodations vs
Security



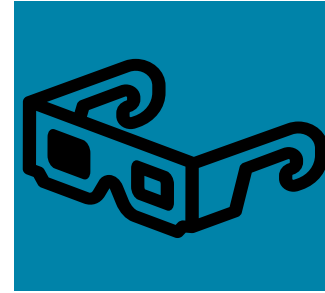
Non-standard requests

Accommodation Review Process

- Who reviews requests?
- How are determinations made?
 - Consider all documentation
 - Continual calibration
 - Written explanations



Outer Limits of Accommodations

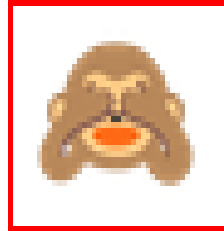


Unlimited time



The accommodation cannot be so extreme that test validity is compromised

Waiving a portion of the test



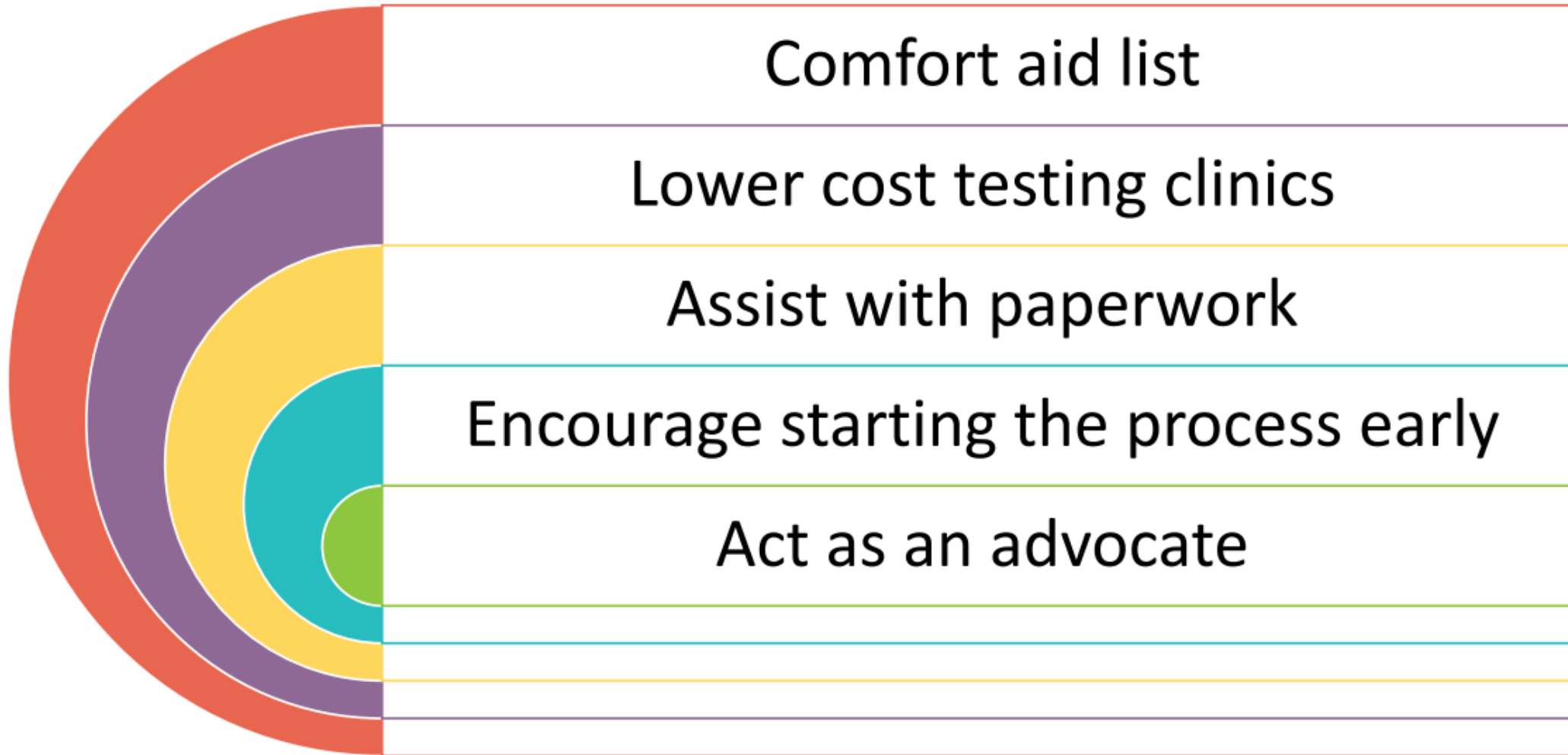
The accommodation cannot fundamentally alter the test's purpose

Administer medical care

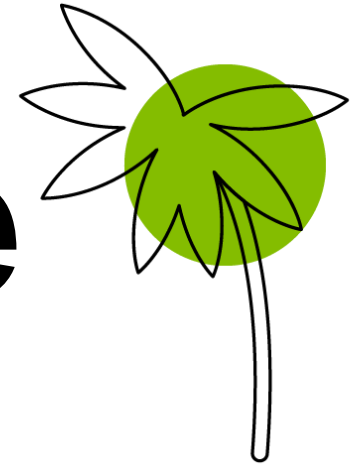


The accommodation cannot jeopardize test security or the safety of staff/others

How can you help your students?



Important Update



Effective August 1, 2023, accommodation approvals will be valid for 2 years.

(some exceptions apply)

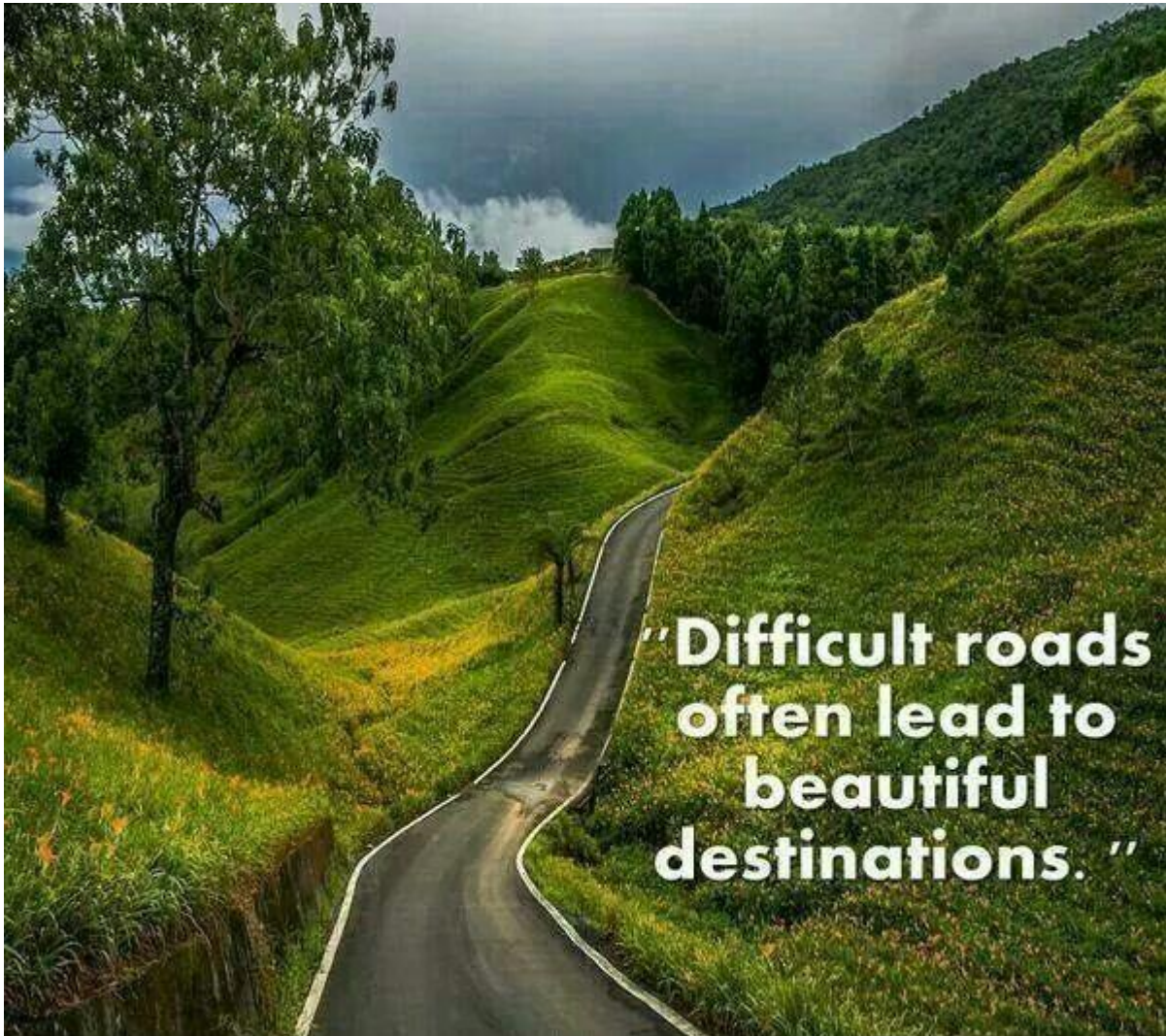
Resources on the Accommodation Page

- [Frequently Asked Questions](#)
- [Lower-cost Testing Clinics in the United States](#)
- [Personal Items and Minor Modifications](#)

Questions? Email accommodations@GED.com



Questions?



**“Difficult roads
often lead to
beautiful
destinations.”**

*Special thank you to all who help
bring equity to GED Testing Service*

Contact Information

Debbie Bergtholdt

Manager, Accommodations

Debbie.Bergtholdt@pearson.com

accommodations@ged.com



Session Survey

Your feedback is important. Please scan the QR code below to rate this session.

