

# Accommodation Update

Debbie Bergtholdt  
GED Conference San Diego, CA  
July 2018



# Agenda

- Overview
- Testing Accommodations
- Documentation
- Helping Strategies
- Questions



# Accommodations Overview



Purpose of  
Accommodations



Not a Guarantee  
of improvement



Individualized  
Consideration



Appropriate  
Documentation

# What's considered a disability?



**Learning and  
Other  
Cognitive  
Disabilities**



**Attention  
Deficit  
Hyperactivity  
Disorder**



**Psychological  
and  
Psychiatric  
Disorders**



**Physical  
Disorders and  
Chronic  
Health  
Conditions**

# What is NOT considered a disability?

ESL

“Slow Learner”

Active substance abuser

Test anxiety

Homemade diagnoses

# Accommodation vs Accessibility

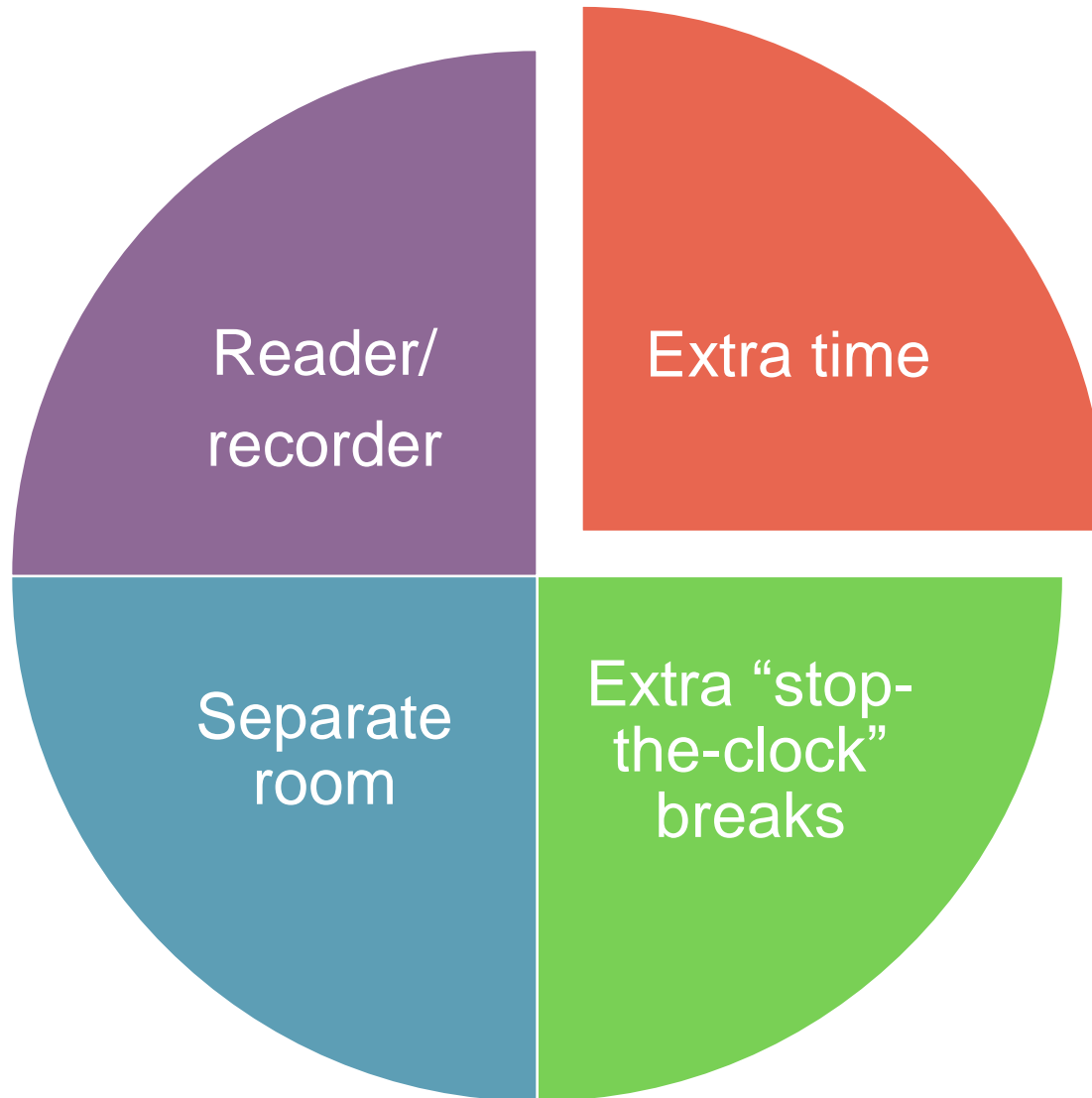
## Accommodation

- Modifications for an individual tester based on a specific disability

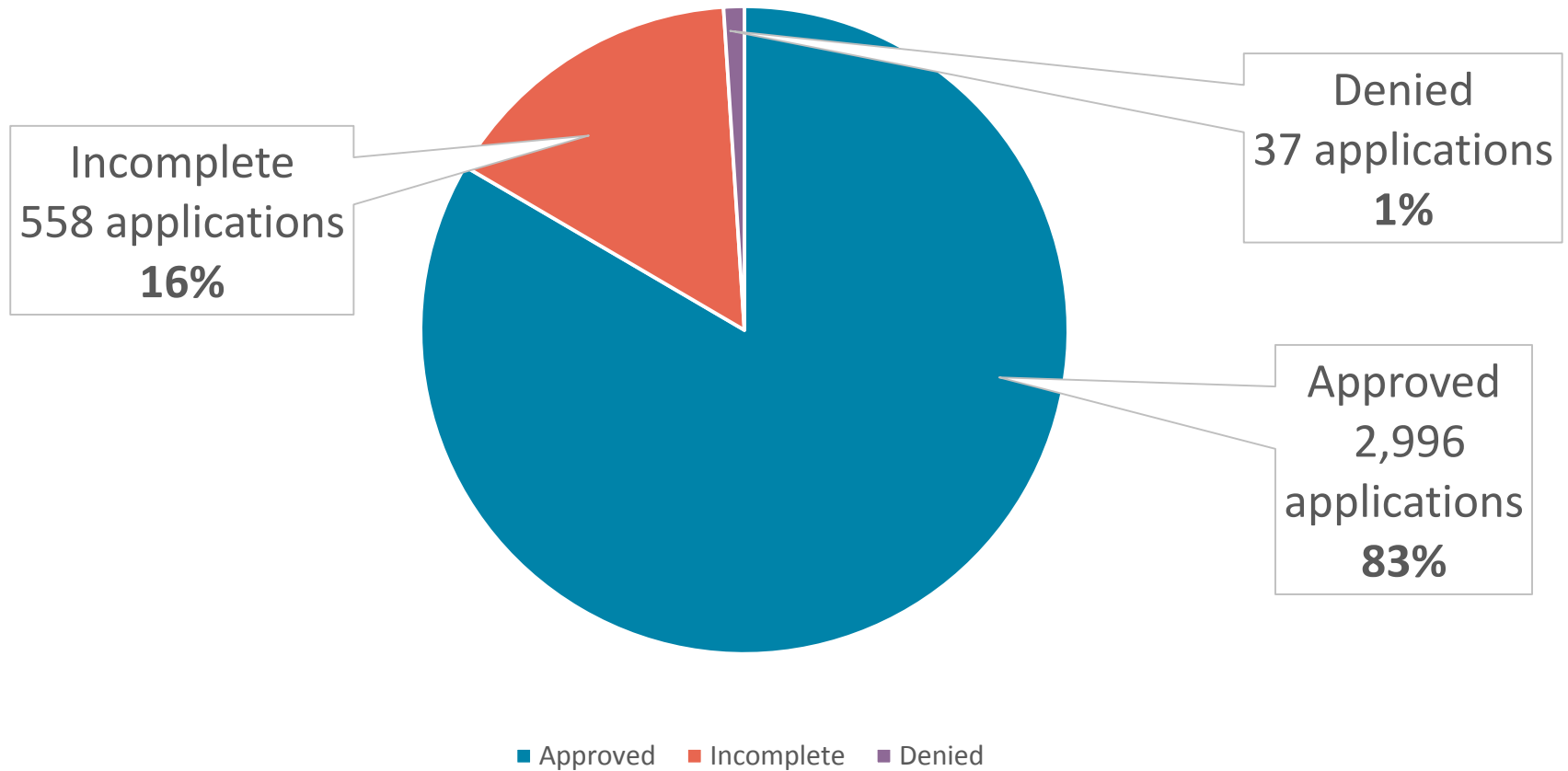
## Accessibility

- Universal access features available to all testers

# Commonly Requested Accommodations

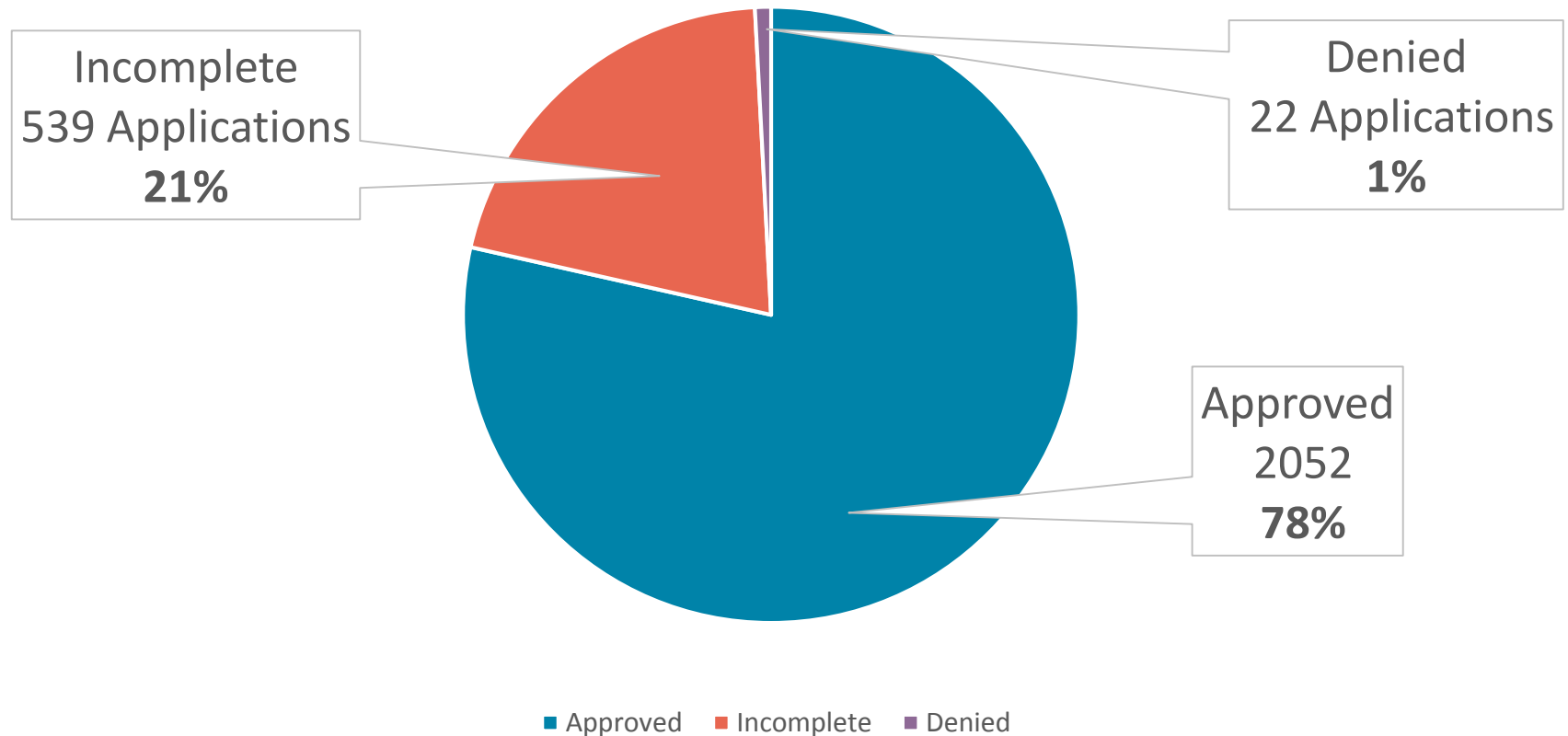


# 2017 Accommodation Determinations





# 2018 Accommodation Determinations (through June)



# Assistive Technology

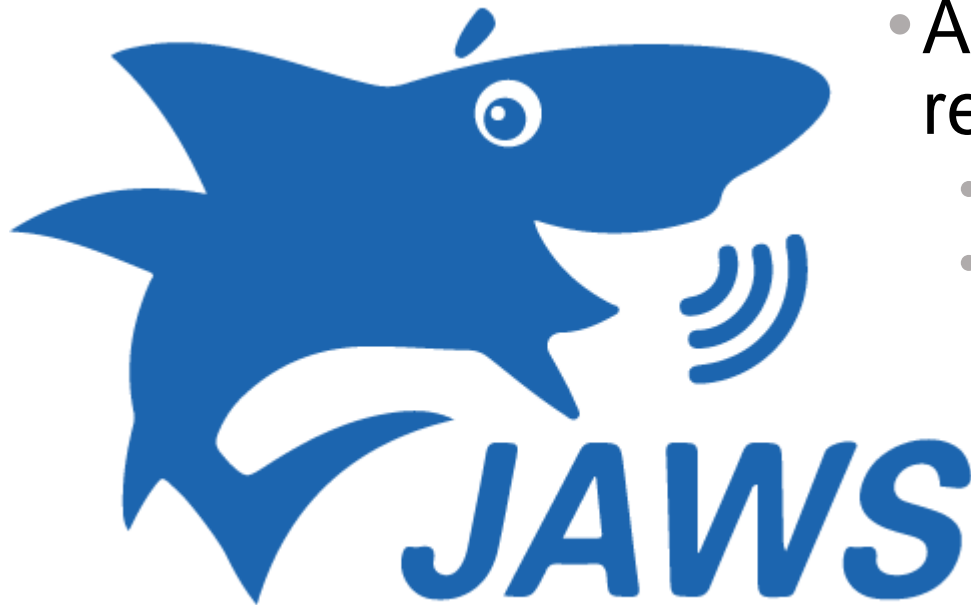
Universal  
Access  
features

Adaptive  
equipment

Magnification

JAWS

# JAWS – Job Access With Speech



- Availability
- Proficiency requirements
- Approved candidates receive:
  - Free practice test link
  - keyboard shortcut reference

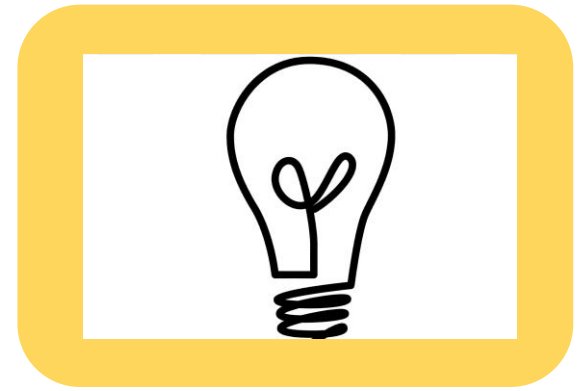
# Emerging Trends in Accommodations and Accessibility



Accommodation  
vs Fundamental  
Alteration



Accommodations  
vs Security



Non-standard  
requests

# Ensuring Tester and Staff Security



- Threats to safety
- Candidate misbehavior in the test center
- Managing potentially dangerous candidates

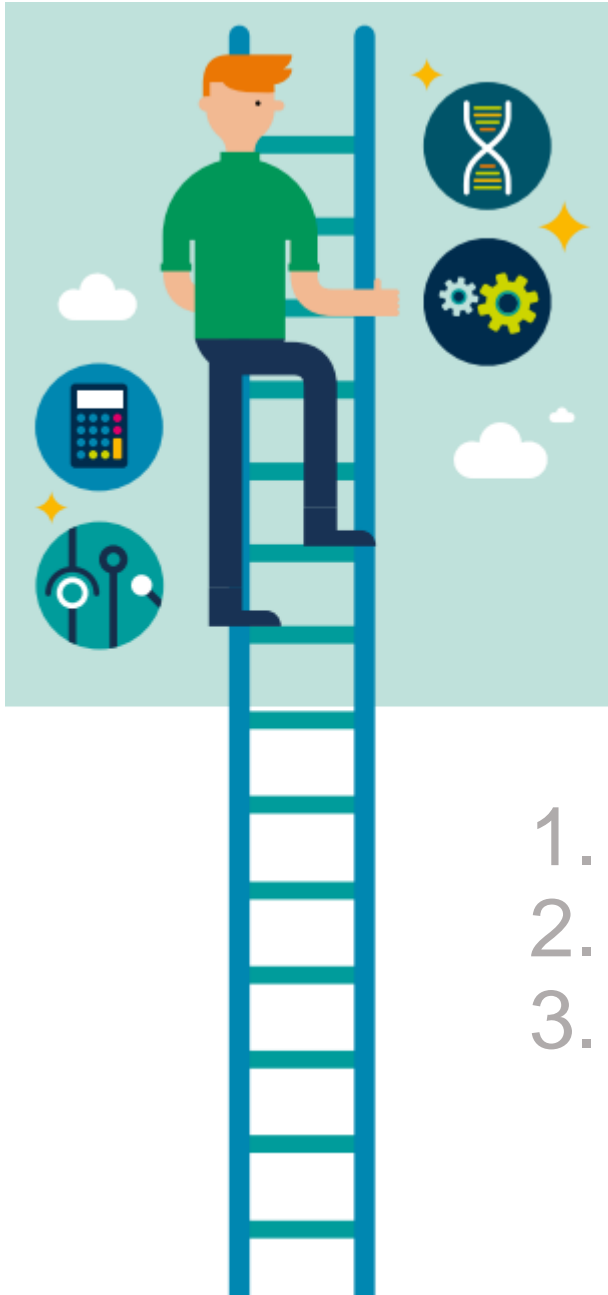
# GEDTS Accommodation Review Process

- Who reviews requests?
- Where are the documentation guidelines?
- How do we make a determination?
  - Consider all documentation
  - Continual calibration
  - Written explanations



# Incomplete Documentation



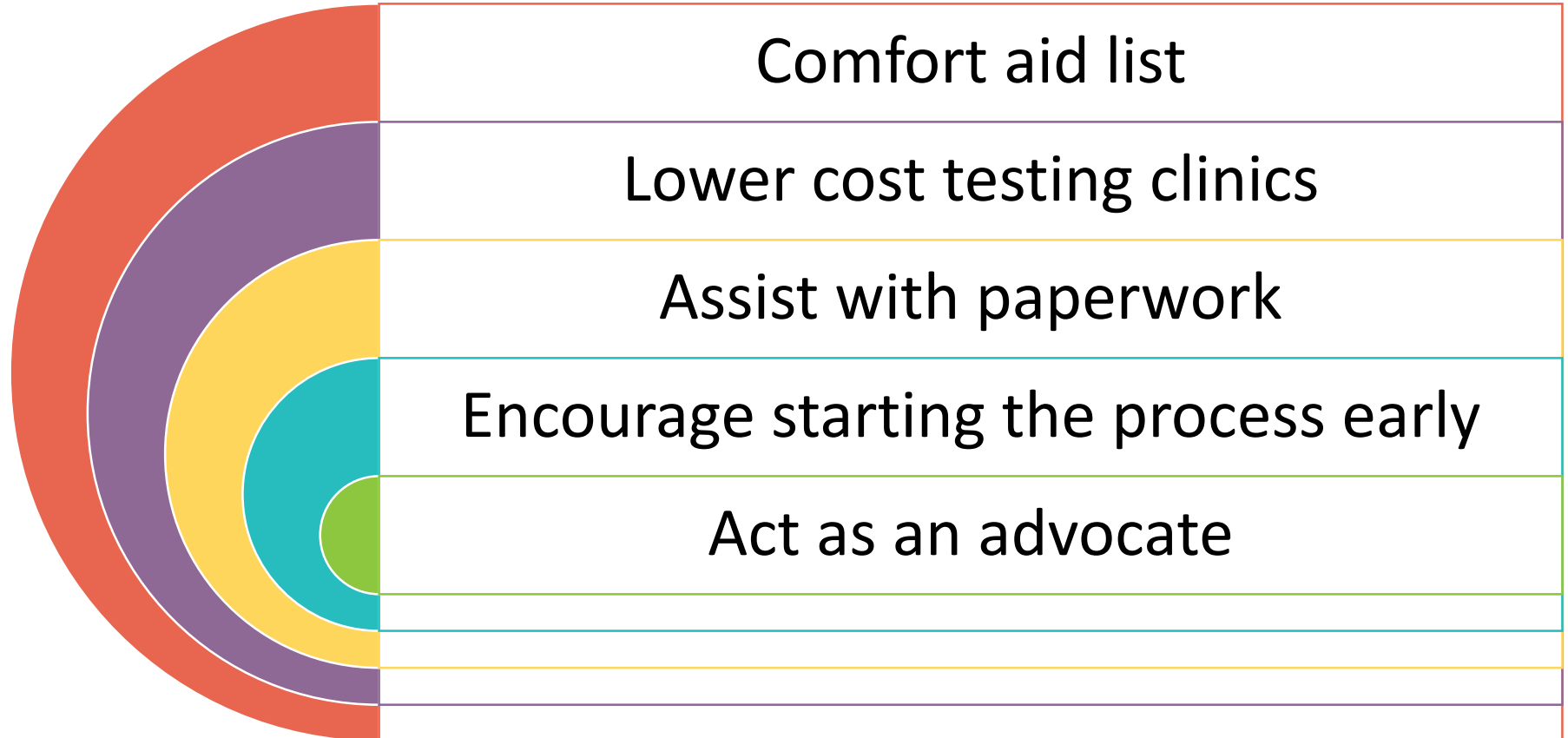


## Top 3 causes of an incomplete application

1. No supporting documentation
2. Missing pages
3. Outdated documentation



# How can you help your students?



# Examples of Unacceptable Requests

Candidate wants  
to take the test  
at home

Candidate wants  
his father to  
proctor the exam

Candidate wants  
to use friend as  
the reader

Candidate wants  
to test on her  
laptop

Candidate asks  
for “unlimited  
time”

Candidate asks  
for “extra time”

# Examples of Unacceptable Evaluators

- Licensed Marriage and Family Therapist
- Pastoral Counselor
- School Counselor
- Family physician (learning disabilities)
- Teacher
- Parent
- Neighbor



# Outer Limits of Accommodations

The accommodation cannot be so extreme that test validity is compromised

- 6X standard time

The accommodation cannot fundamentally alter the test's purpose

- Waiving a portion of the test

The accommodation cannot jeopardize test security or the safety of staff/others

- Testing at home
- Administer medical care

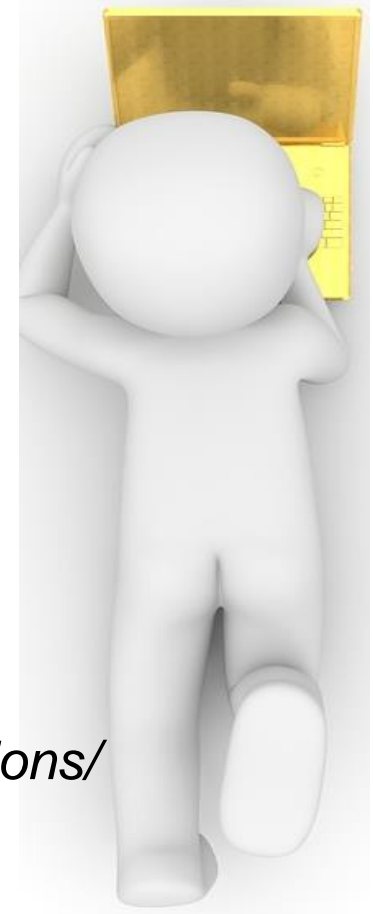
# The Path to Request Accommodations

*Using the Reasonable Adjustment Request System*



# Online Request System

- **Benefits**
  - Paper forms are replaced with 6 easy steps
  - Immediate feedback
  - Secure environment
  - No need to pay for faxing services
- *Paper request forms available at*  
*[https://ged.com/educators\\_admins/test\\_admin/corrections/](https://ged.com/educators_admins/test_admin/corrections/)*



# Resources

- Accommodation page  
[https://ged.com/about\\_test/accommodations/](https://ged.com/about_test/accommodations/)
- Paper request forms  
[https://ged.com/educators\\_admins/test\\_admin/corrections/](https://ged.com/educators_admins/test_admin/corrections/)



# Questions?



# Contact Information

**Debbie Bergtholdt**  
*Manager, Accommodations*

*[Debbie.Bergtholdt@pearson.com](mailto:Debbie.Bergtholdt@pearson.com)*

*[accommodations@ged.com](mailto:accommodations@ged.com)*

*Helpdesk: 952-681-4907*

