

All About Accommodations

2019 GED Conference
July 24-26, 2019
Chicago



Agenda

- Overview
- Types of accommodations on high stakes exams
- Accommodation process
- Documentation requirements
- Best way to assist
- Questions



Accommodations Overview



Purpose of
Accommodations



Not a Guarantee
of improvement



Individualized
Consideration



Appropriate
Documentation

What's considered a disability?



**Learning and
Other
Cognitive
Disabilities**



**Attention
Deficit
Hyperactivity
Disorder**



**Psychological
and
Psychiatric
Disorders**



**Physical
Disorders and
Chronic
Health
Conditions**

What is NOT considered a disability?

ESL

“Slow Learner”

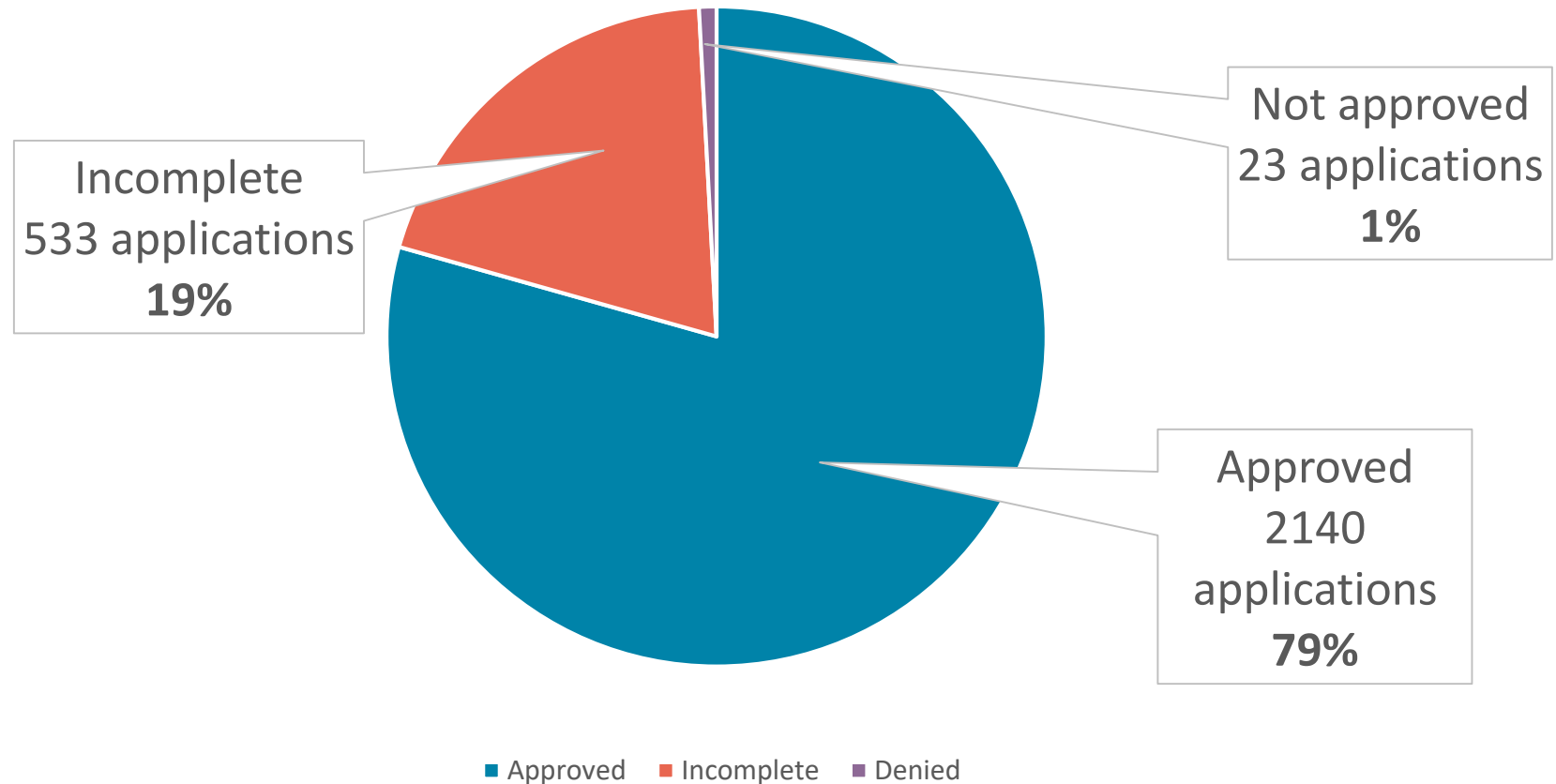
Active substance abuser

Test anxiety

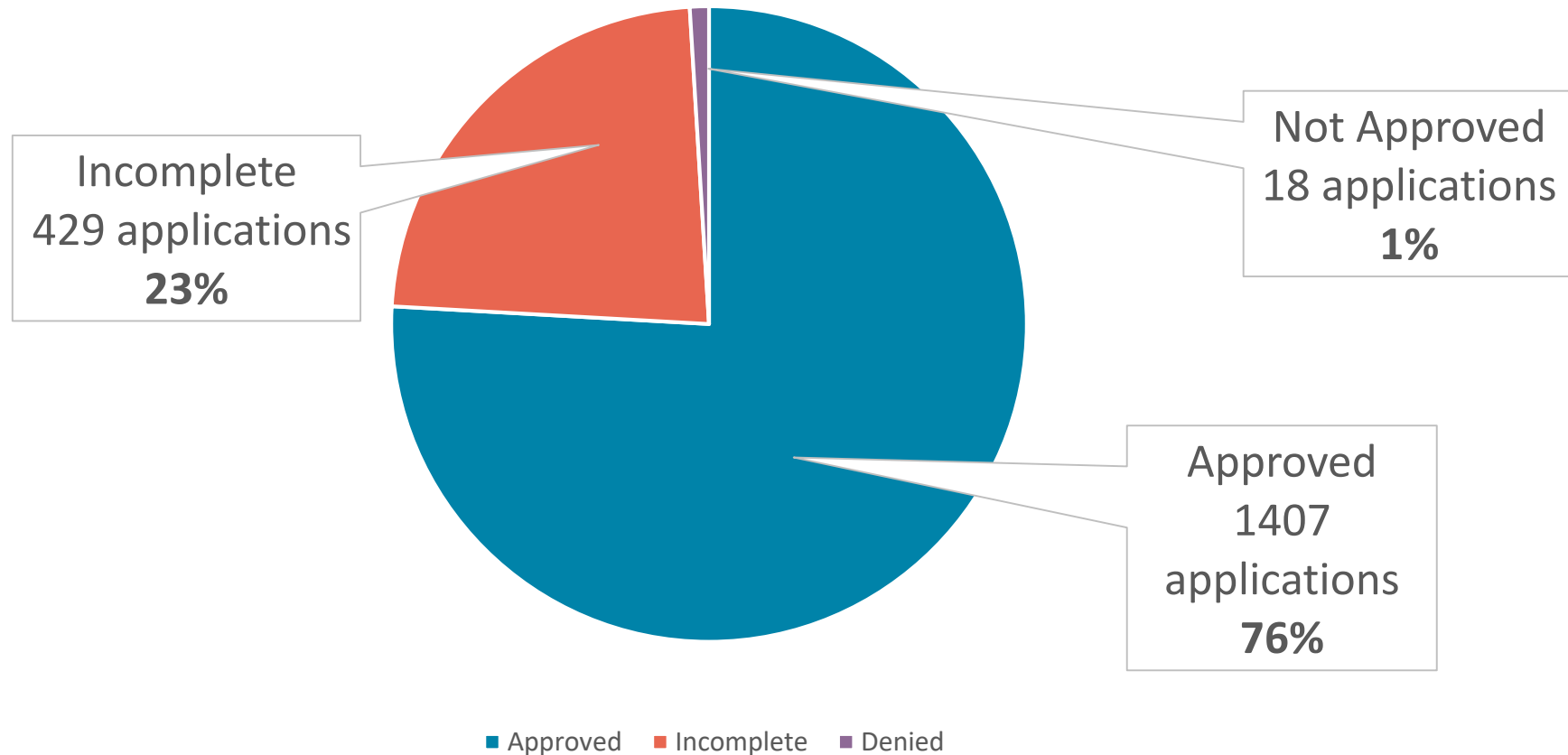
Homemade diagnoses

2018 Accommodation Determinations

Total Requests: 2696



2019 Accommodation Determinations (through June) Total Requests: 1858



New Features

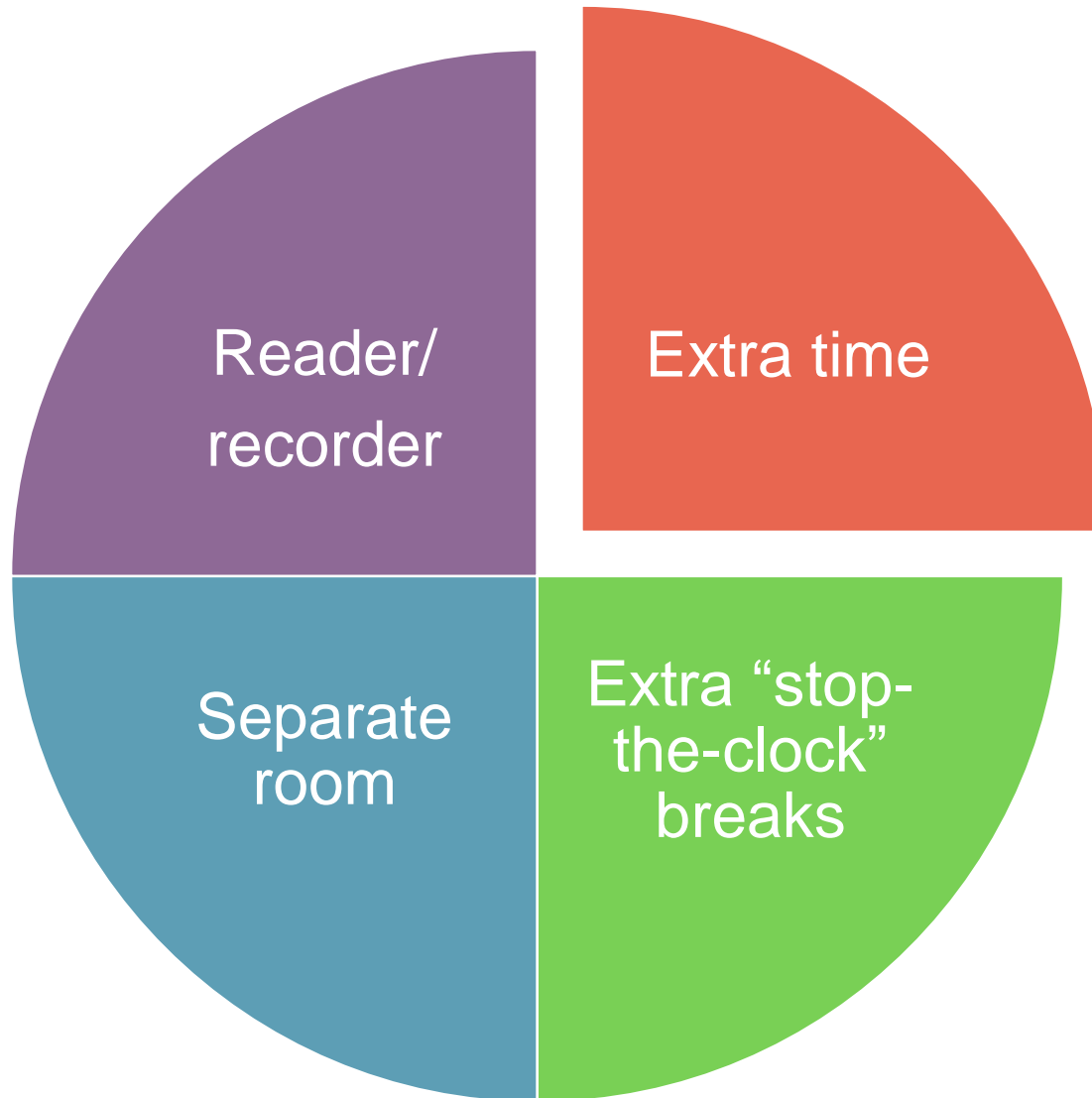
Online Request System

- Candidates can request accommodations online. Starts with them clicking “yes” to the accommodation question on GED.com

Web Scheduling

- Candidates with approvals of extra time, breaks and other things that do not require manual intervention are now directed to schedule online.

Commonly Requested Accommodations



Assistive Technology

Universal
Access
features

Adaptive
equipment

Magnification

JAWS

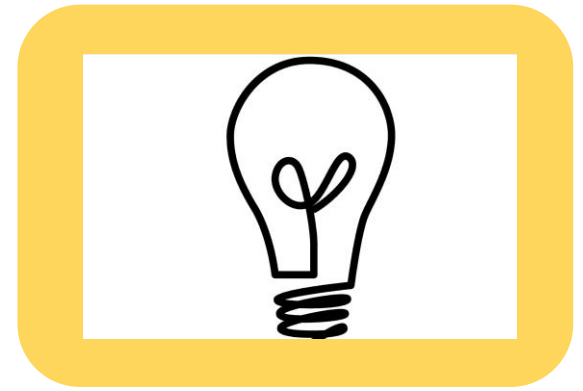
Emerging Trends in Accommodations and Accessibility



Accommodation
vs Fundamental
Alteration



Accommodations
vs Security



Non-standard
requests

Behind the scenes



- What we manage

- Threats to safety
- Candidate misbehavior in the test center
- Potentially dangerous candidates
- Varsity Blues

Documentation Guidelines

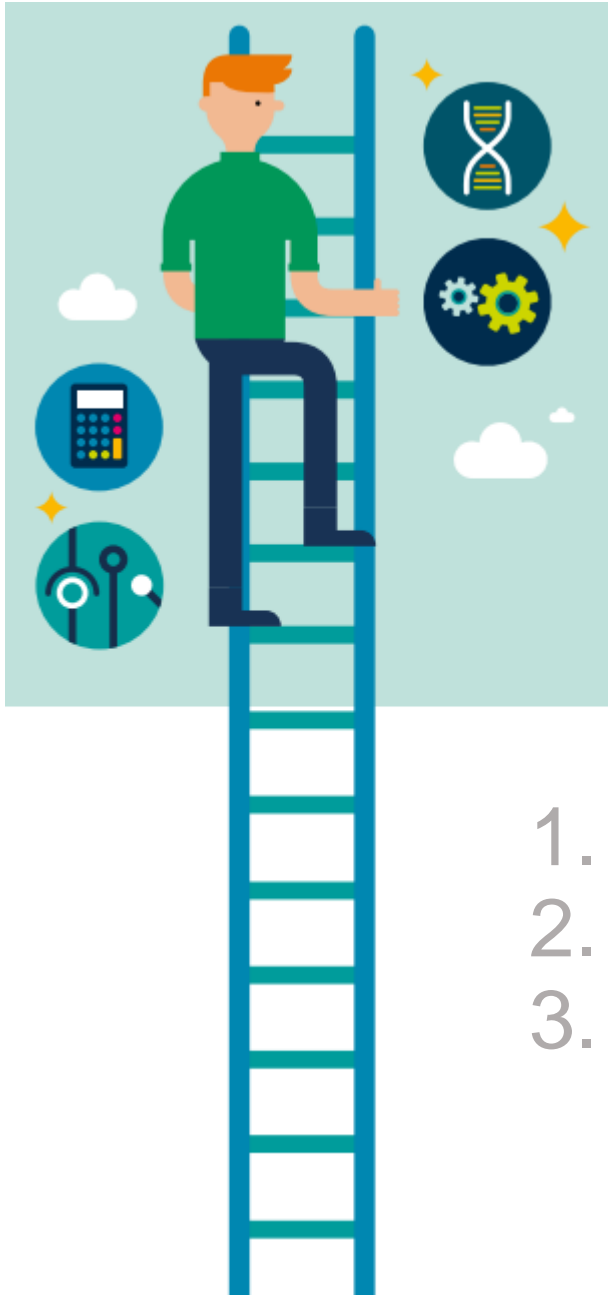
Review documentation guidelines



Accommodation Review Process

- Who reviews requests?
- How are determinations made?
 - Consider all documentation
 - Continual calibration
 - Written explanations





Top 3 causes of an incomplete application

1. No supporting documentation
2. Missing pages
3. Outdated documentation

Ms Kyle had been homeschooled from the Third until Tenth Grade. She attempted public school for her Sophomore year. She failed in February of 2017 and had a private tutor. She dropped out of high school in January of 2018.

Patient has a diagnosis of ADHD since age 10 confirmed with testing at that time. She is currently on Concerta 36 mg 2 tablets daily. Medications have improved her concentration. During her school attendance she had a Section 504 plan allowing for increased test taking time.

This delightful young woman wishes to obtain her GED so she can train to become a Veterinary Technician.

I support her request for testing accommodations as follows

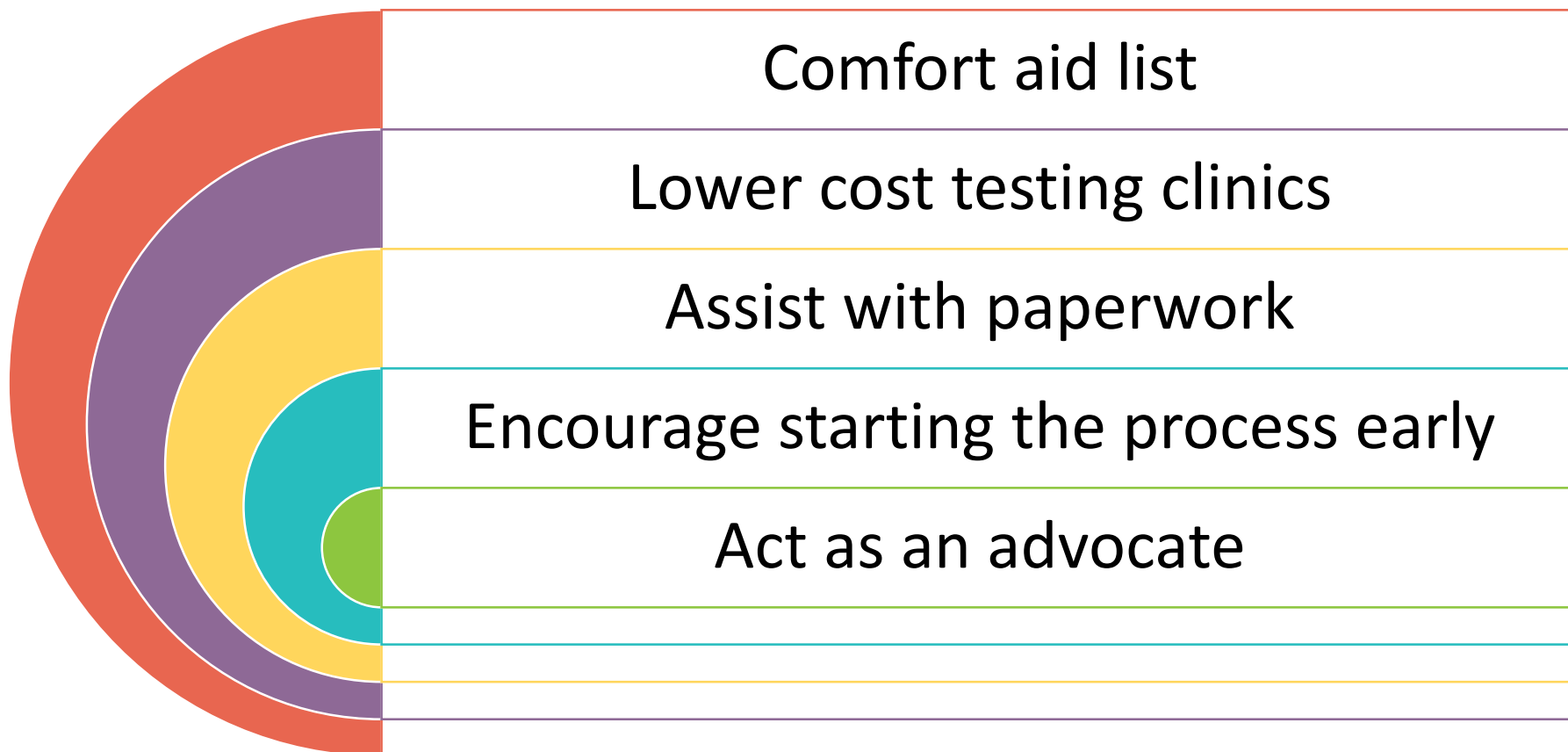
1. Test time extension (normal time + 100% additional)
2. Separate testing room to remove student from distractions
3. 1 break every 30 minutes.

She has the following diagnosis

ADD Inattentive type

Generalized Anxiety disorder

How can you help your students?



Are these acceptable Evaluators?

- Licensed Marriage and Family Therapist
- Pastoral Counselor
- School Counselor
- Family physician (learning disabilities)
- Teacher
- Parent
- Neighbor



Outer Limits of Accommodations

The accommodation cannot be so extreme that test validity is compromised

- 6X standard time

The accommodation cannot fundamentally alter the test's purpose

- Waiving a portion of the test

The accommodation cannot jeopardize test security or the safety of staff/others

- Testing at home
- Administer medical care

Resources

Accommodation page

- https://ged.com/about_test/accommodations/

Paper request forms

- https://ged.com/educators_admins/test_admin/corrections/

Contact us!

- accommodations@ged.com

Resources on the Accommodation Page

Additional Resources

- [Frequently Asked Questions](#)
- [Lower-cost Testing Clinics in the United States](#)
- [Personal Items and Minor Modifications](#)

Questions? Email accommodations@GED.com.





Questions?

Contact Information

Debbie Bergtholdt
Manager, Accommodations

Debbie.Bergtholdt@pearson.com
952-905-7292

accommodations@ged.com
Helpdesk: 952-681-4907

