

Accommodations Update

2020 COABE Conference
All Hands on Deck Webinar
July 1, 2020



Agenda

- Overview
- Types of accommodations on high stakes exams
- Accommodation process
- Documentation requirements
- Best way to assist
- Questions



Accommodations Overview



Purpose of
Accommodations



Not a Guarantee
of improvement



Individualized
Consideration



Appropriate
Documentation

What's considered a disability?



**Learning and
Other
Cognitive
Disabilities**



**Attention
Deficit
Hyperactivity
Disorder**



**Psychological
and
Psychiatric
Disorders**



**Physical
Disorders and
Chronic
Health
Conditions**

What is NOT considered a disability?

ESL

“Slow Learner”

Active substance abuser

Test anxiety

Homemade diagnoses

New Features

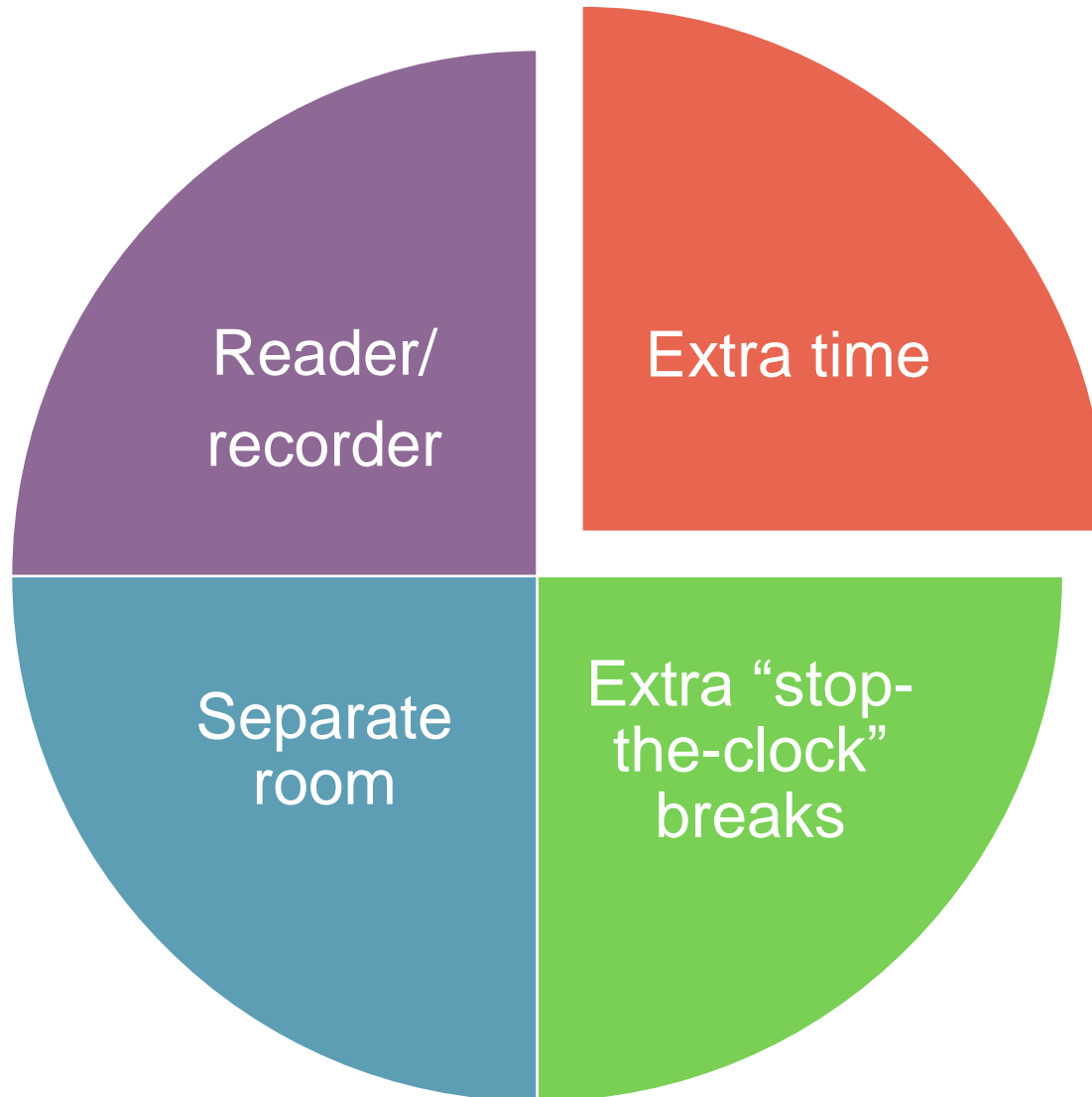
Online Request System

- Candidates can request accommodations online. Starts with them clicking “yes” to the accommodation question on GED.com

Web Scheduling

- Candidates with approvals of extra time, breaks and other things that do not require manual intervention are now directed to schedule online.

Commonly Requested Accommodations



Assistive Technology

Universal
Access
features

Adaptive
equipment

Magnification

JAWS

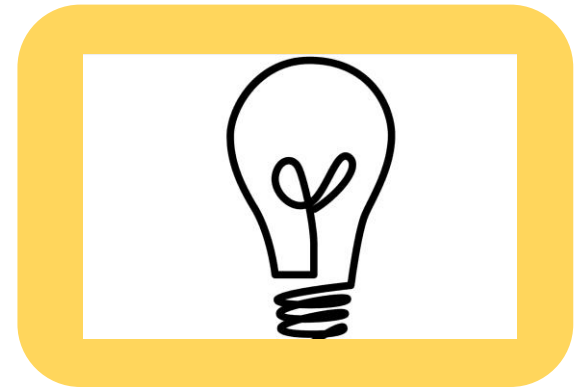
Emerging Trends in Accommodations and Accessibility



Accommodation
vs Fundamental
Alteration



Accommodations
vs Security



Non-standard
requests

Ensuring Tester and Staff Security



- Threats to safety
- Candidate misbehavior in the test center
- Managing potentially dangerous situations in the test center

Documentation Guidelines

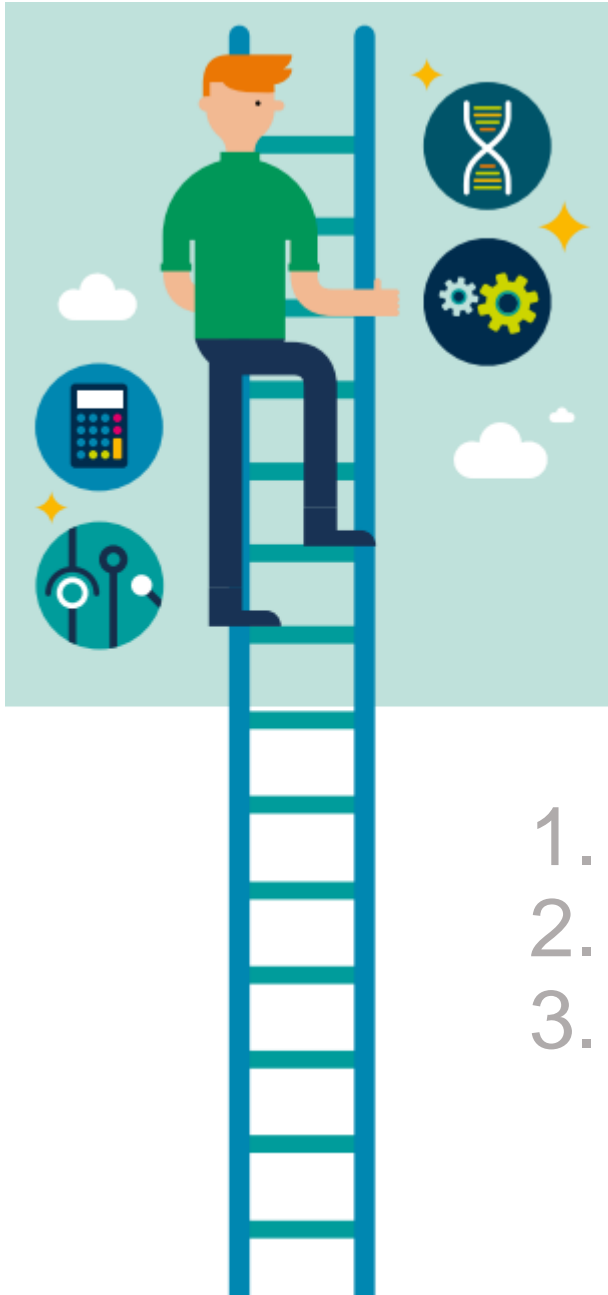
Review documentation guidelines



Accommodation Review Process

- Who reviews requests?
- How are determinations made?
 - Consider all documentation
 - COVID-19 considerations
 - Continual calibration
 - Written explanations

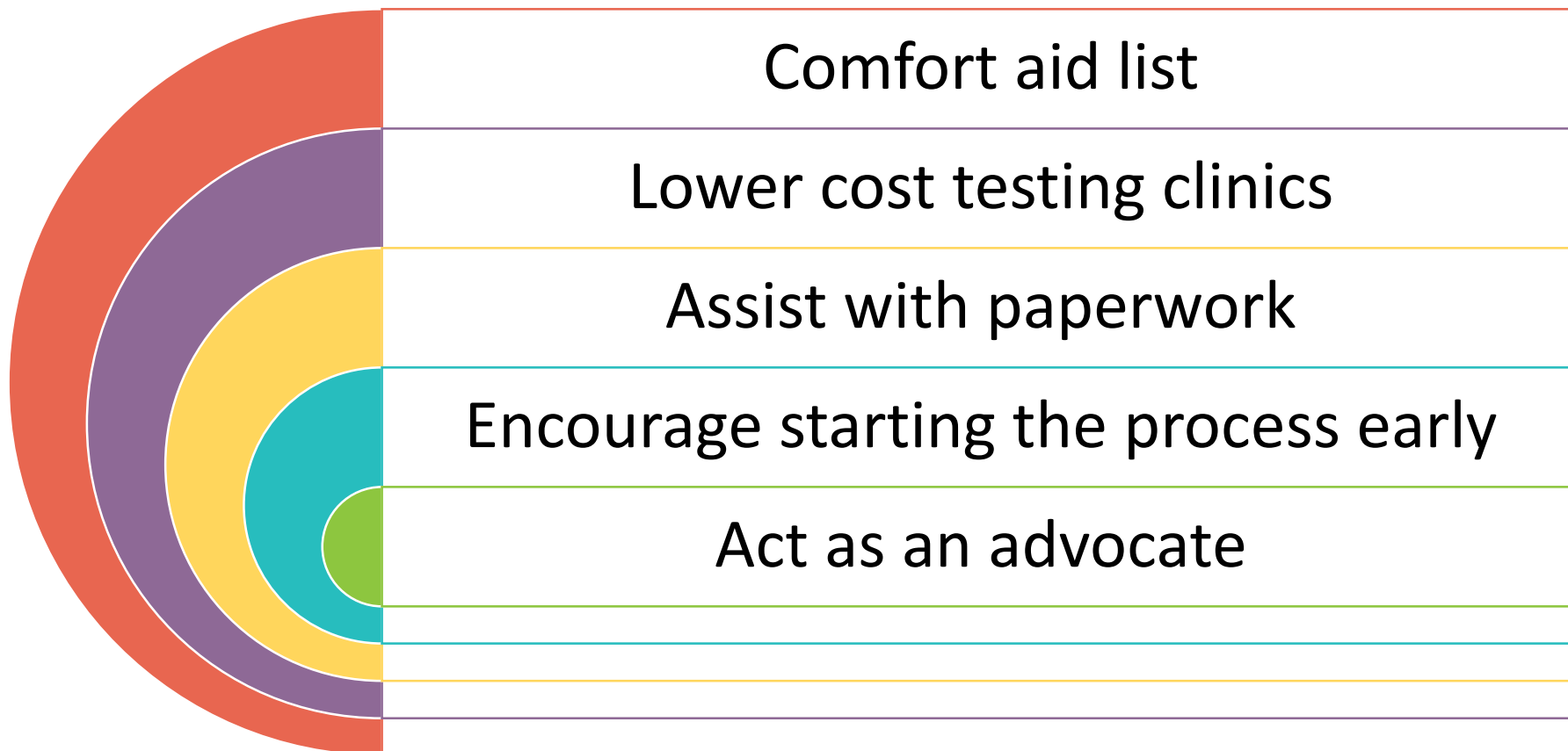




Top 3 causes of an incomplete application

1. No supporting documentation
2. Missing pages
3. Outdated documentation

How can you help your students?



Are these acceptable Evaluators?

- Licensed Marriage and Family Therapist
- Pastoral Counselor
- School Counselor
- Family physician (learning disabilities)
- Teacher
- Parent
- Neighbor



Outer Limits of Accommodations

The accommodation cannot be so extreme that test validity is compromised

- Untimed test

The accommodation cannot fundamentally alter the test's purpose

- Waiving a portion of the test

The accommodation cannot jeopardize test security or the safety of staff/others

- Administer medical care



Questions?

Contact Information

Debbie Bergtholdt
Manager, Accommodations

Debbie.Bergtholdt@pearson.com

accommodations@ged.com

Helpdesk: 952-681-4907

